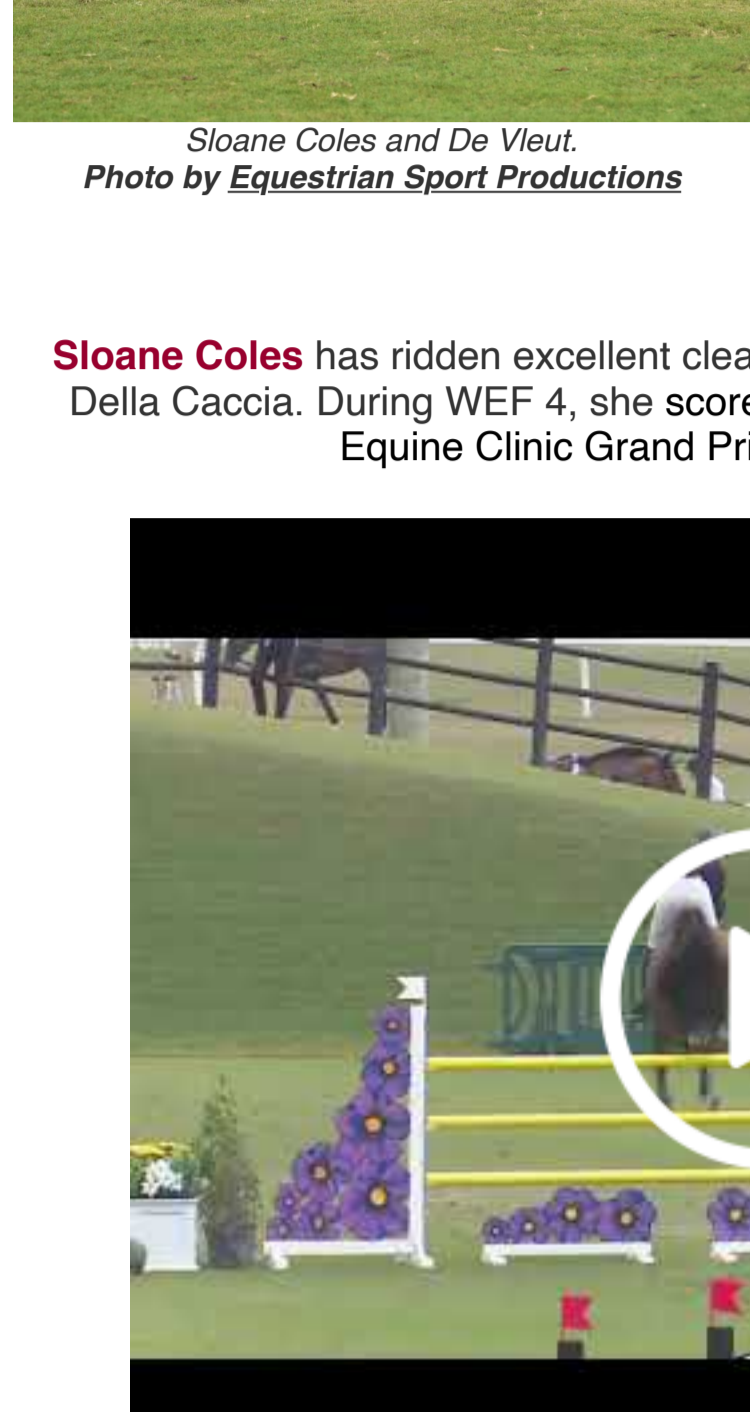


Stellar Results for Team Spring Ledge at WEF 2021

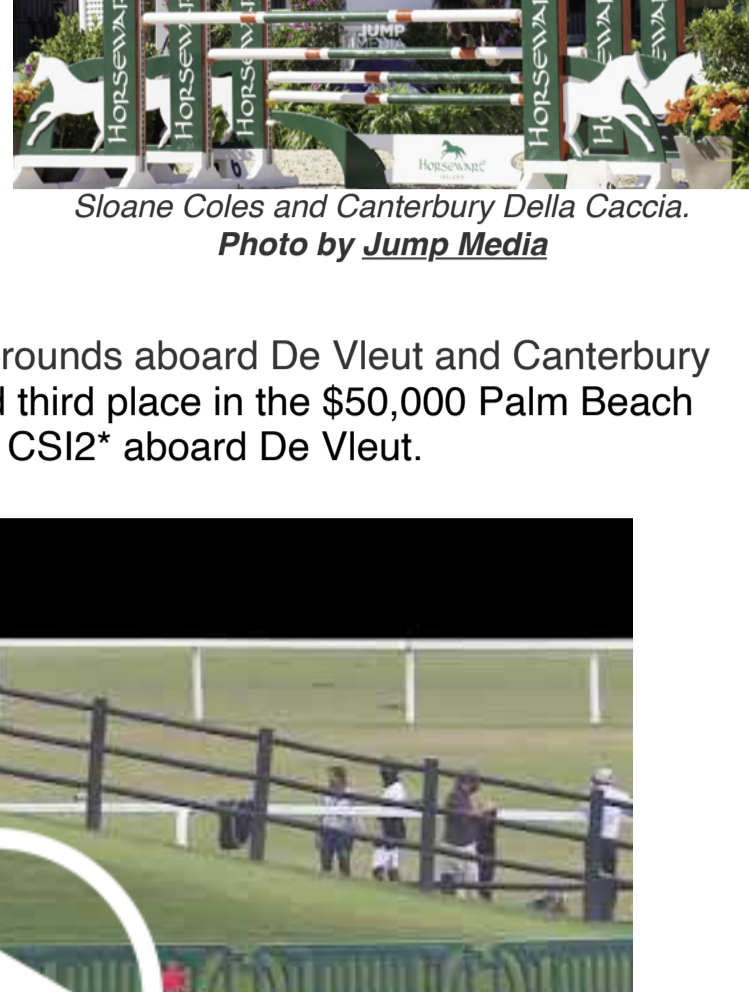
Spring Ledge has relocated to Wellington, FL, for the winter months and has seen strong results across the jumper divisions at the Winter Equestrian Festival (WEF). From the Low Children's to the High Amateur-Owners and Grand Prix divisions, Spring Ledge riders have secured top ribbons throughout the early weeks of the circuit.

Keep reading to find out who won, what's next, and get some great riding tips from Spring Ledge trainer, Sloane Coles.

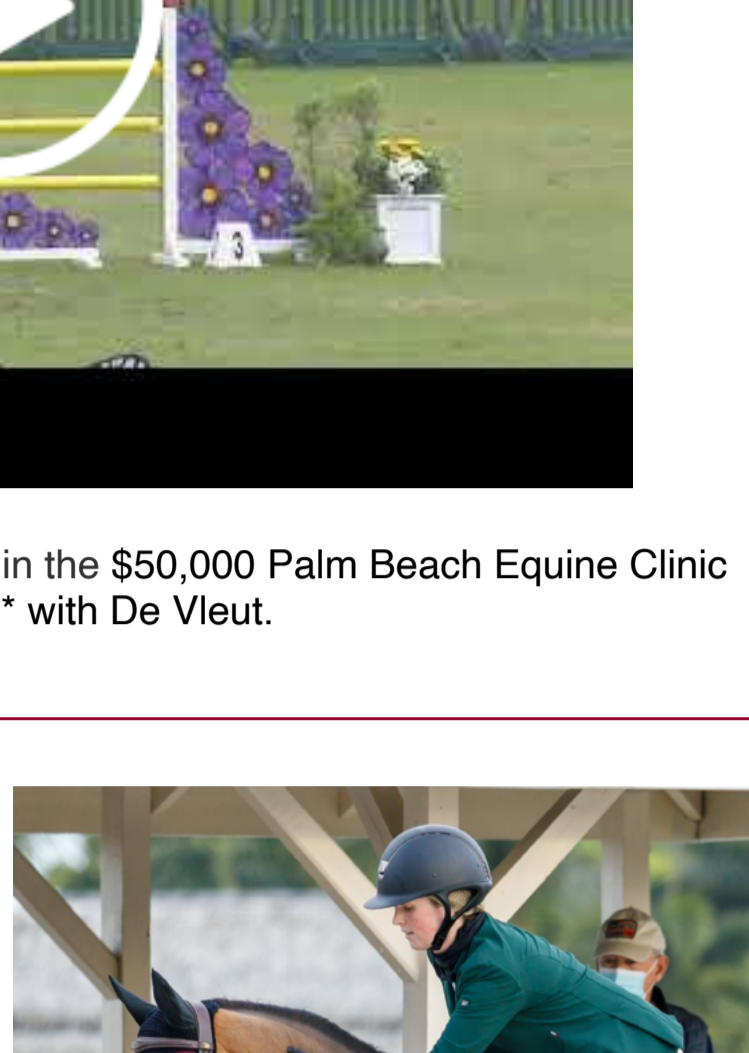
Competition Highlights



Sloane Coles and De Vleut. Photo by Equestrian Sport Productions

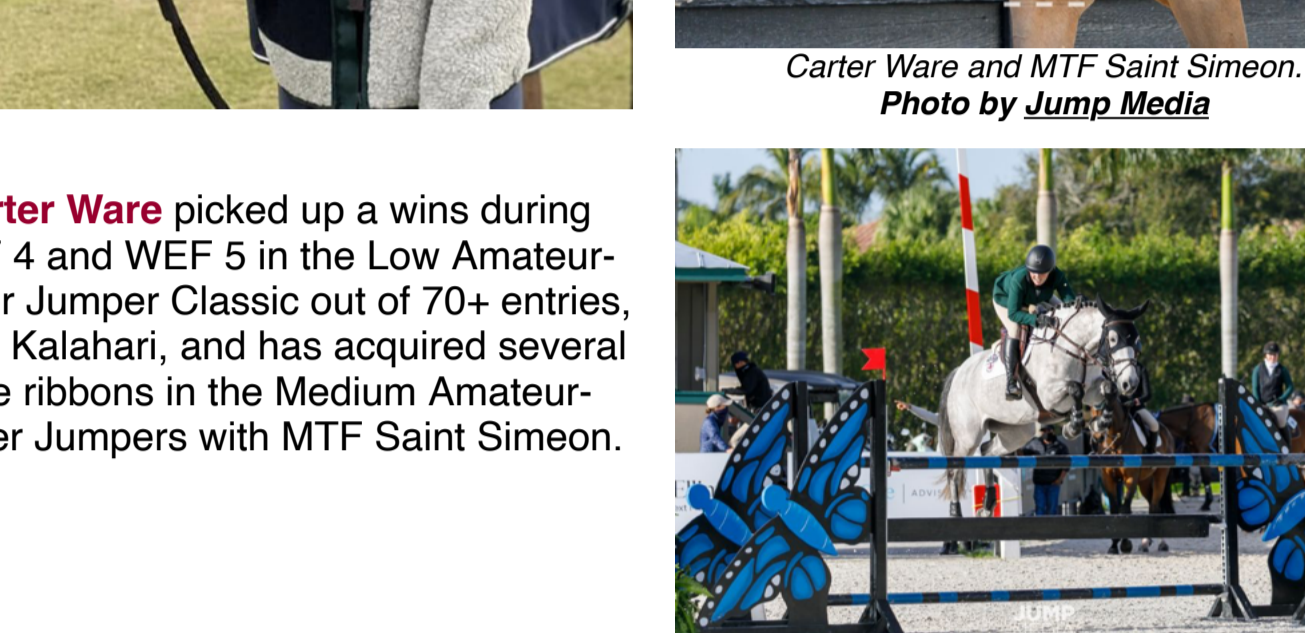


Sloane Coles and De Vleut. Photo by Jump Media



Sloane Coles and Canterbury Della Caccia. Photo by Jump Media

Sloane Coles has ridden excellent clear rounds aboard De Vleut and Canterbury Della Caccia. During WEF 4, she scored third place in the \$50,000 Palm Beach Equine Clinic Grand Prix CSI2* aboard De Vleut.



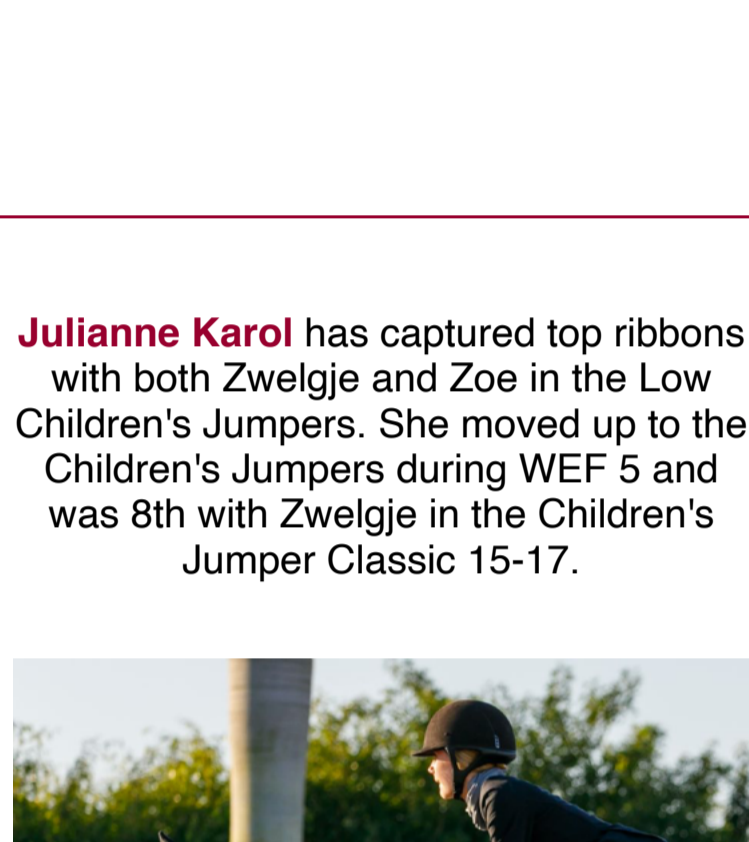
Watch **Sloane Coles'** third place jump-off in the \$50,000 Palm Beach Equine Clinic Grand Prix CSI2* with De Vleut.



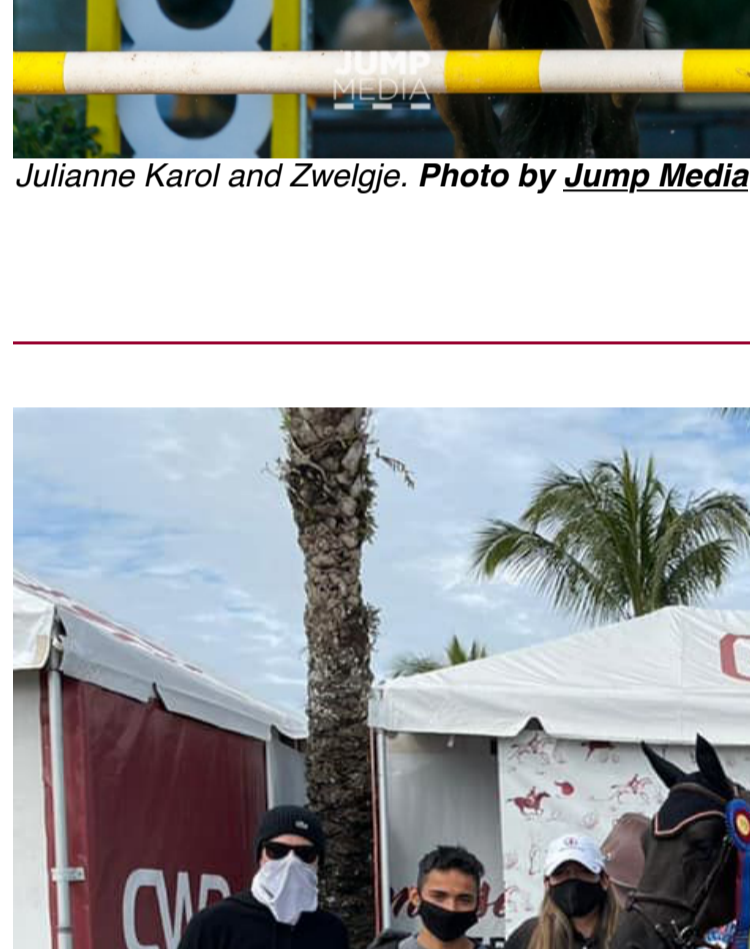
Carter Ware picked up a wins during WEF 4 and WEF 5 in the Low Amateur-Owner Jumper Classic out of 70+ entries, riding Kalahari, and has acquired several blue ribbons in the Medium Amateur-Owner Jumpers with MTF Saint Simeon.



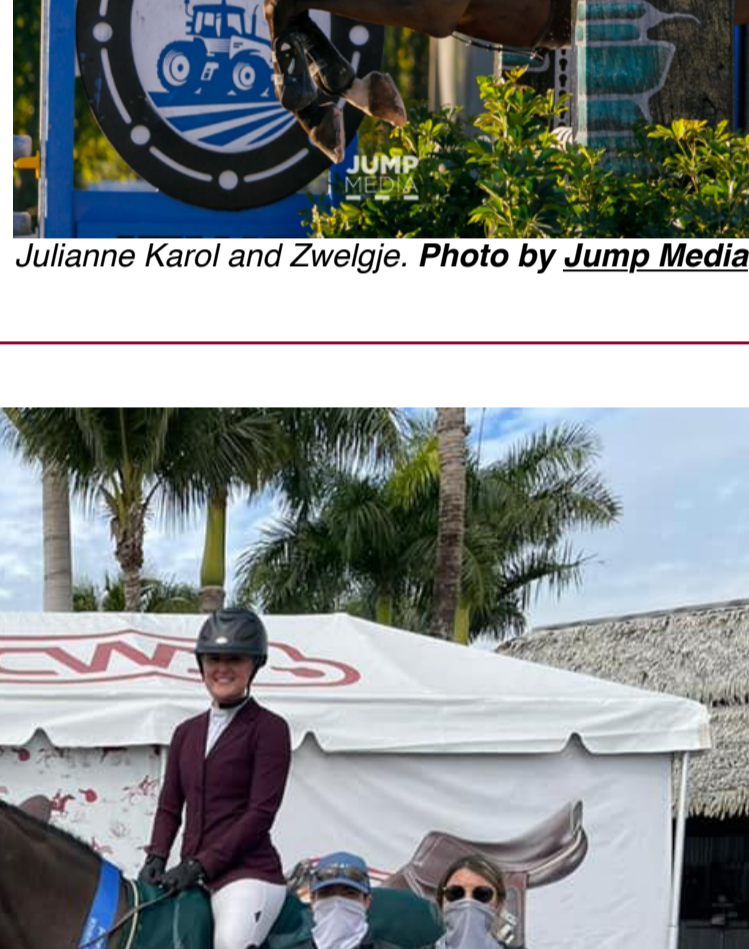
Carter Ware and MTF Saint Simeon. Photo by Jump Media



Carter Ware and Kalahari. Photo by Jump Media

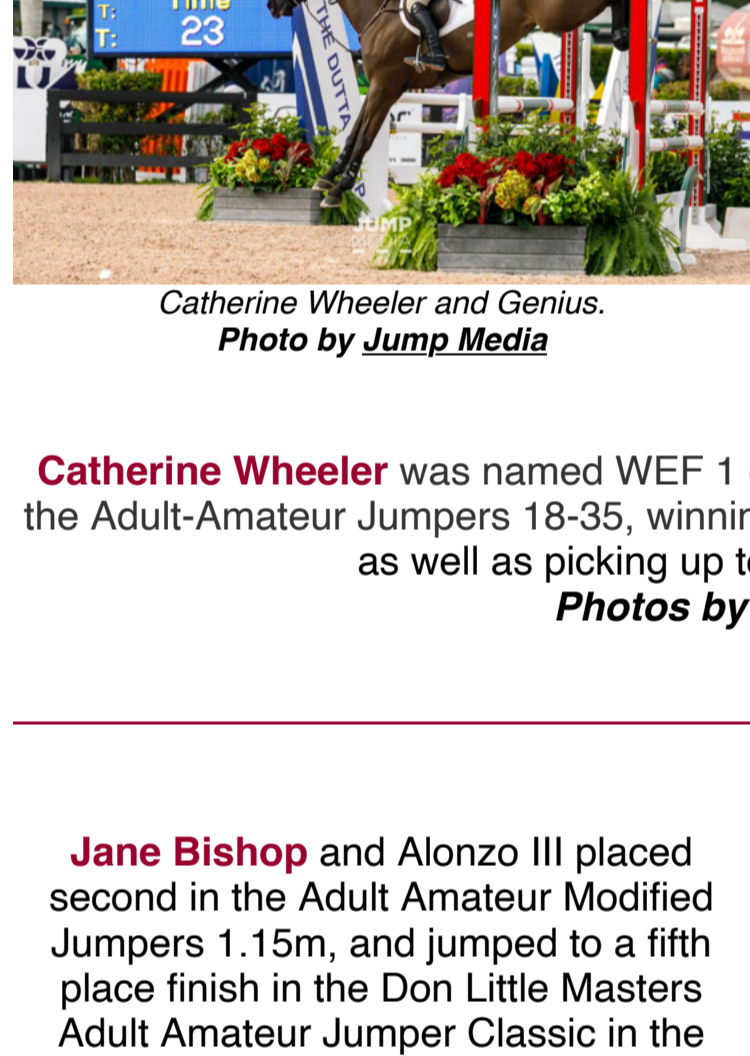


Hope Cushman and Fausto. Photo by Jump Media

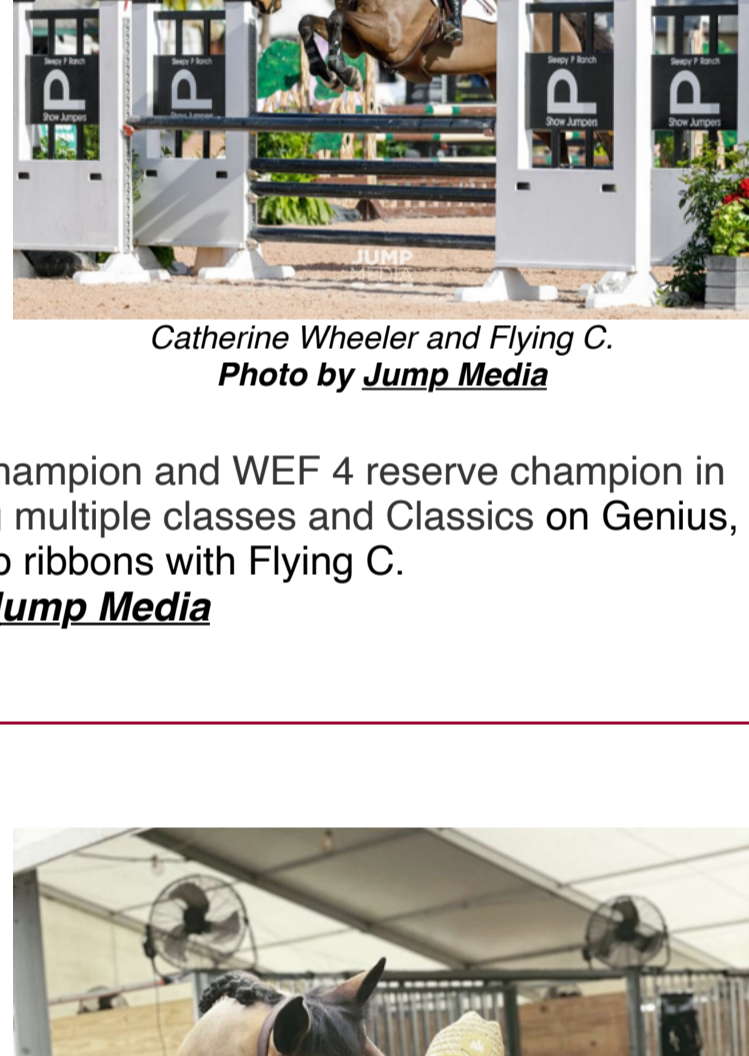


Hope Cushman and VDL iPad. Photo by Jump Media

Hope Cushman jumped a clear first round in the SJHOF High Amateur-Owner Jumper Classic during WEF 4 with Fausto and has laid down impressive clear rounds with VDL iPad in the Low and Medium Amateur-Owner Jumpers.



Julianne Karol and Zweglje. Photo by Jump Media

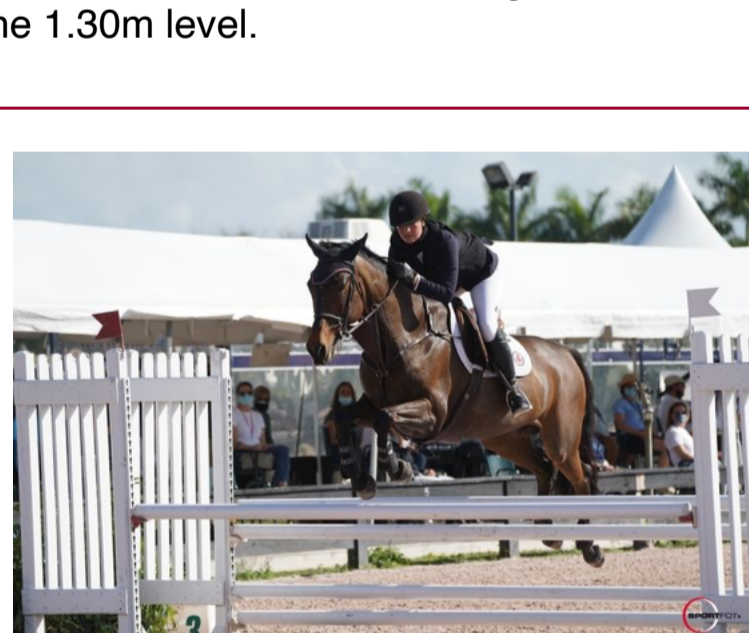


Julianne Karol and Zweglje. Photo by Jump Media

Julianne Karol has captured top ribbons with both Zweglje and Zoe in the Low Children's Jumpers. She moved up to the Children's Jumpers during WEF 5 and was 8th with Zweglje in the Children's Jumper Classic 15-17.



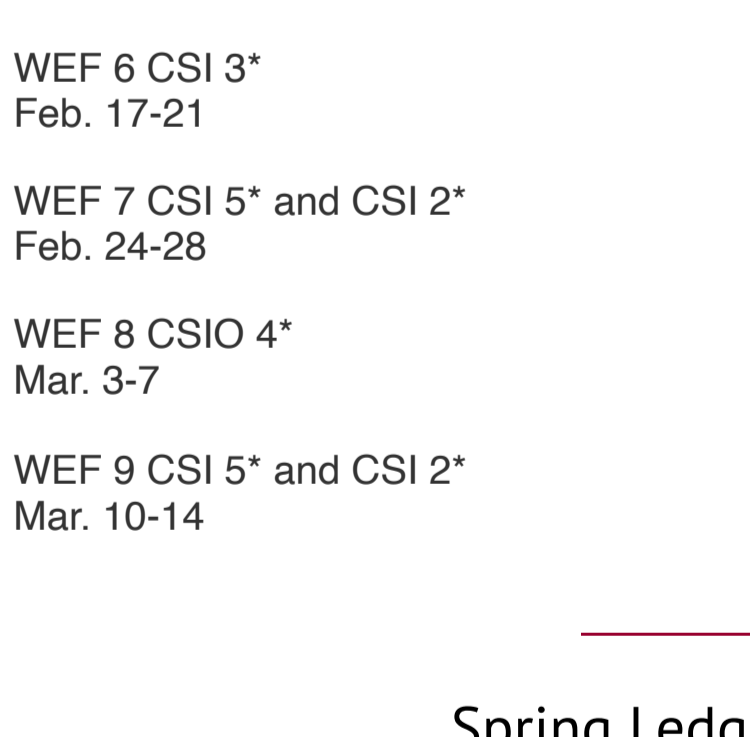
Catherine Wheeler and Genius. Photo by Jump Media



Catherine Wheeler and Flying C. Photo by Jump Media

Catherine Wheeler was WEF 1 champion and WEF 4 reserve champion in the Adult-Amateur Jumpers 18-35, winning multiple classes and Classics on Genius, as well as picking up top ribbons with Flying C.

Photos by Jump Media

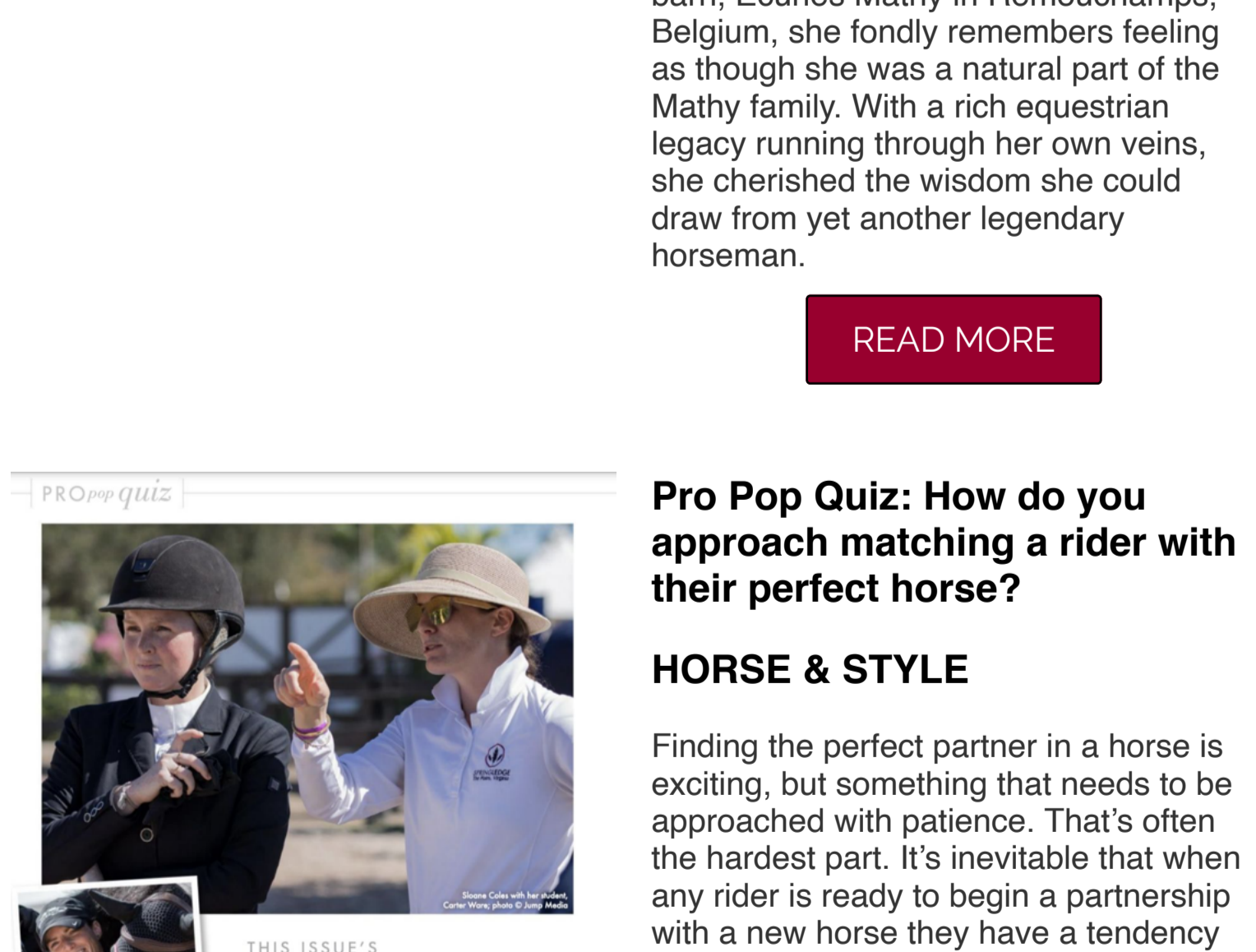


Jane Bishop and Alonzo III. Photo by Sportfot



Photo courtesy of Jane Bishop

Jane Bishop and Alonzo III placed second in the Adult Amateur Modified Jumpers 1.15m, and jumped to a fifth place finish in the Don Little Masters Adult Amateur Jumper Classic in the International Arena during WEF 3.



Claire Pacelli and Cavalier. Photo by Sportfot

Claire Pacelli and Cavalier have logged consistent clear rounds throughout circuit jumping up to the 1.30m level.



Brianna McCol and Corina. Photo by Jump Media



Kendall Schuler and Bold Missy. Photo by Sportfot

Brianna McCol and Corina jumped into the ribbons in the Low Children's Jumpers out of 71 entries during WEF 5.

Kendall Schuler and Bold Missy rode to a top 10 finish in the Low Children's Jumpers out of 71 entries during WEF 5.

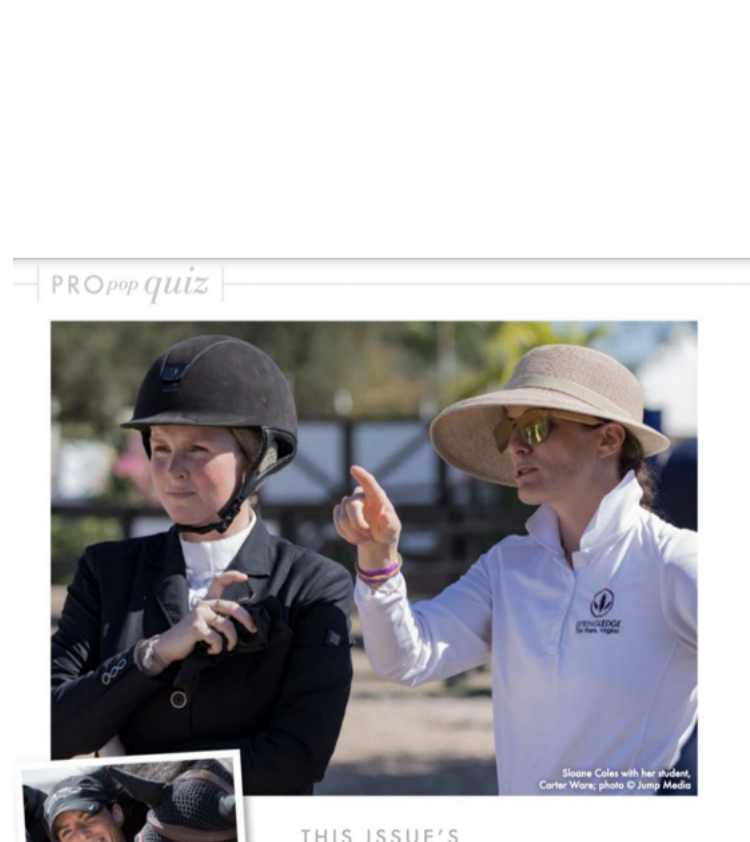
What's Next?

The team at Spring Ledge continues to compete at WEF 2021 and looks forward to the remainder of the circuit. Here's what Spring Ledge has planned for the rest of the winter season:

Winter Equestrian Festival Wellington, FL

- WEF 6 CSI 3* Mar. 17-21
- WEF 7 CSI 5* and CSI 2* Feb. 24-28
- WEF 8 CSIO 4* Mar. 3-7
- WEF 9 CSI 5* and CSI 2* Mar. 10-14
- WEF 10 CSI 3* Mar. 17-21
- WEF 11 CSI 5* and CSI 2* Mar. 24-28
- WEF 12 CSI 4* Mar. 31- Apr. 4

Spring Ledge in the News



Learning From a Master: Sloane Coles Appreciates True Horsemanship Thanks to François Mathy, Sr.

WORLD OF SHOWJUMPING

When U.S. show jumping athlete Sloane Coles looks back on the time she spent riding in François Mathy Sr.'s dealing barn, Ecuries Mathy in Remouchamps, Belgium, she fondly remembers feeling as though she was a natural part of the Mathy family. With a rich equestrian legacy running through her own veins, she cherished the wisdom she could draw from yet another legendary horseman.

READ MORE

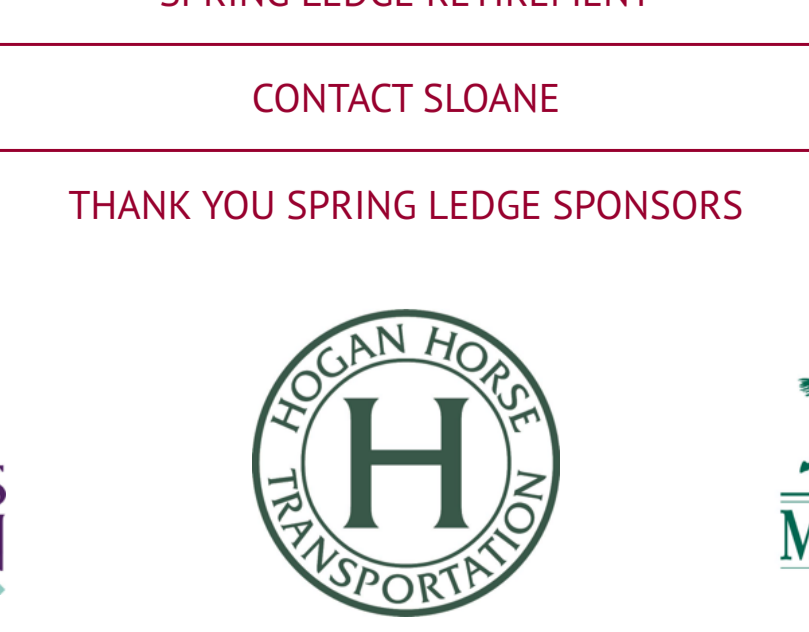


Pro Pop Quiz: How do you approach matching a rider with their perfect horse?

HORSE & STYLE

Finding the perfect partner in a horse is exciting, but something that needs to be approached with patience. That's often the hardest part. It's inevitable that when any rider is ready to begin a partnership with a new horse they have a tendency to rush the process. It's important to remember that the right horse will come along—sometimes that's right away, and sometimes it takes some searching. Either way, patience is the most important tool for making a good match.

READ MORE



VISIT OUR WEBSITE

SPRING LEDGE RETIREMENT

CONTACT SLOANE

THANK YOU SPRING LEDGE SPONSORS

